



LOCAL ROADS CONNECTIVITY PROJECT



Construction of street "2" in the village of Rankovce, Municipality of Rankovce

Total road length: $L = 750\text{m}$

- Design speed: 40 km/h
- Road profile width: 8.50 m
- Maximum cross slope: 2.50%
- Maximum longitudinal slope: 2.77%

Pavement Structure

- BNHS 16A - asphalt layer: $d = 7\text{cm}$
- Base layer of crushed stone: $d = 30\text{cm}$

The subject street is part of T8D4 and is the only one for implementation in the Municipality of Rankovce under this agreement.

The work is being carried out by the construction company "Lendi Grup DOOEL Skopje".

Project Overview

The construction works include the following tasks:

- Securing and marking the route
- Scraping (planning) of the existing road
- Construction of an embankment
- Mechanical excavation of soil in a wide excavation III and IV category with loading and transportation to a location or landfill indicated by the Investor-Municipality
- Procurement, transportation and installation of a buffer layer of crushed stone material for the road $d_{\min}=30\text{ cm}$ to the required compaction
- Procurement, transportation and installation of concrete curbs (MB40 18/24)
- Procurement, transportation and installation of concrete curbs (MB40 8/15)
- Procurement, transportation and installation of concrete paver elements for sidewalk $d=6\text{cm}$, placed on fine sand of 3-5cm
- Asphalt paving with BNHS 16A, $d = 7\text{cm}$

Before construction, the street, i.e. the road structure, was in poor condition, i.e. it was an existing dirt road. In order to improve traffic connectivity as well as the smooth and safe operation of road traffic, it was necessary to reconstruct the same road.

The value of the signed contract is **14,928,360** denars.

Currently, **95 %** of the street is completed. Attached are photographs documenting the street before construction, during construction and the completed sections.



**LOCAL ROADS
CONNECTIVITY PROJECT**



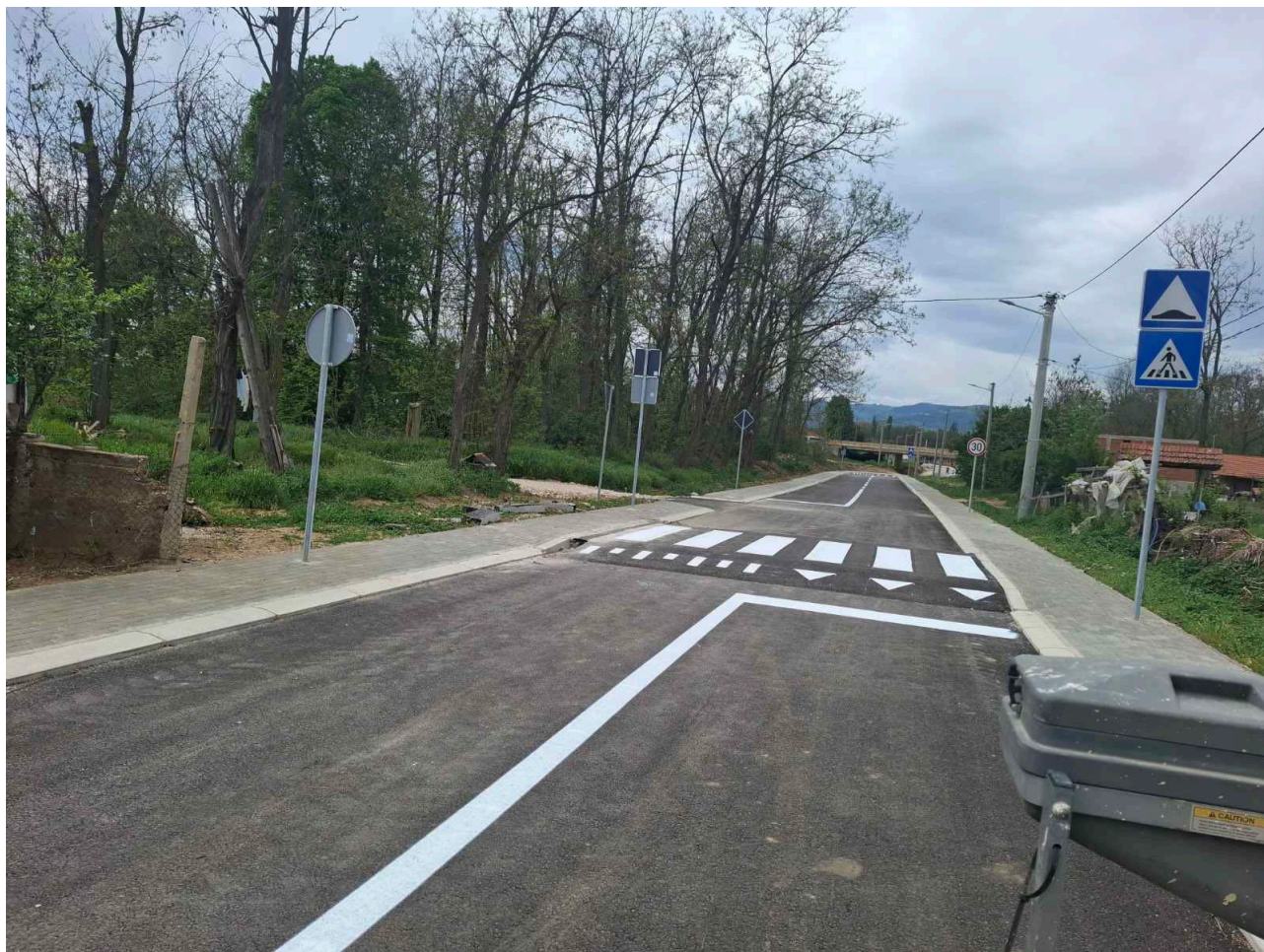


**LOCAL ROADS
CONNECTIVITY PROJECT**





**LOCAL ROADS
CONNECTIVITY PROJECT**





**LOCAL ROADS
CONNECTIVITY PROJECT**

